

FIG. 1

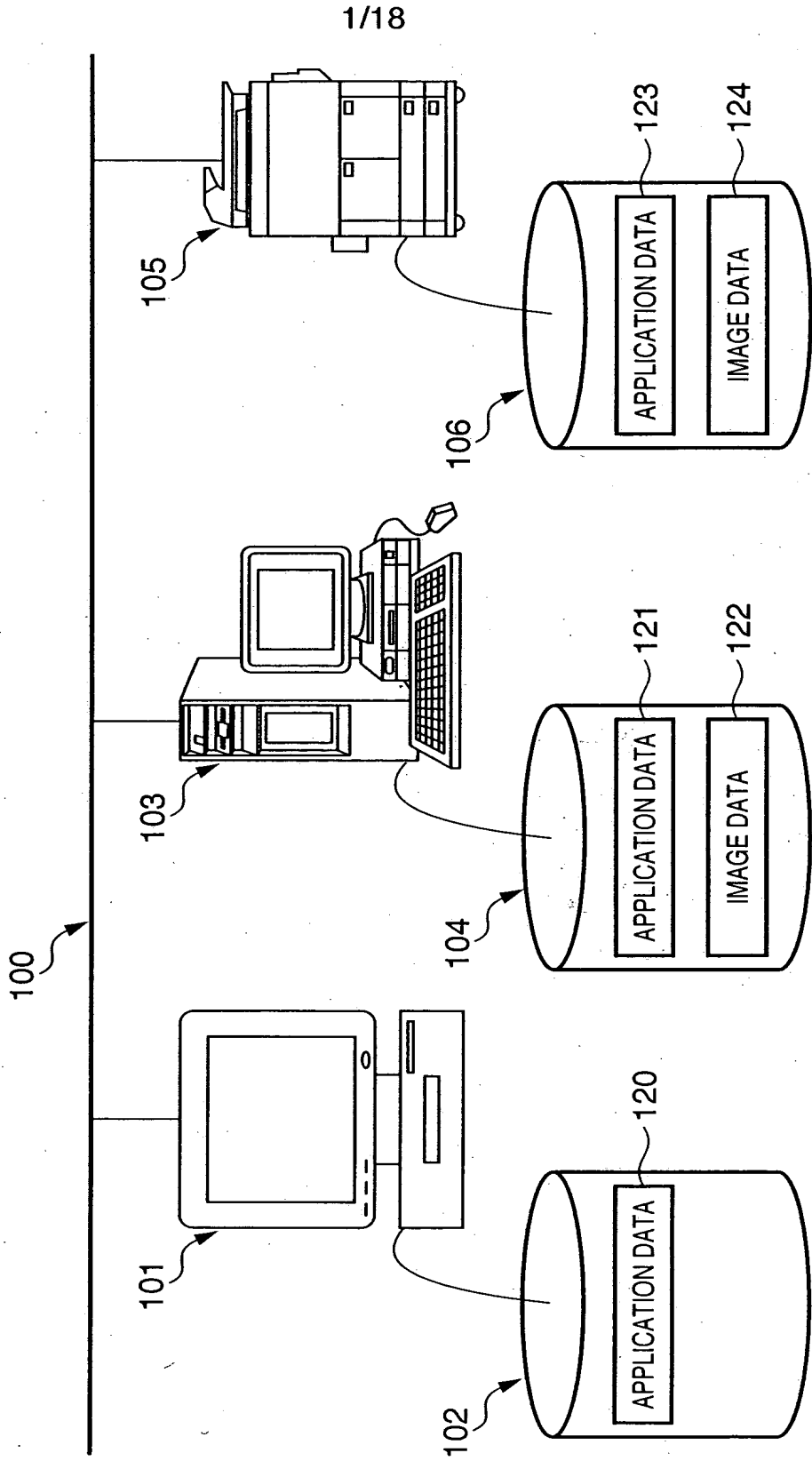
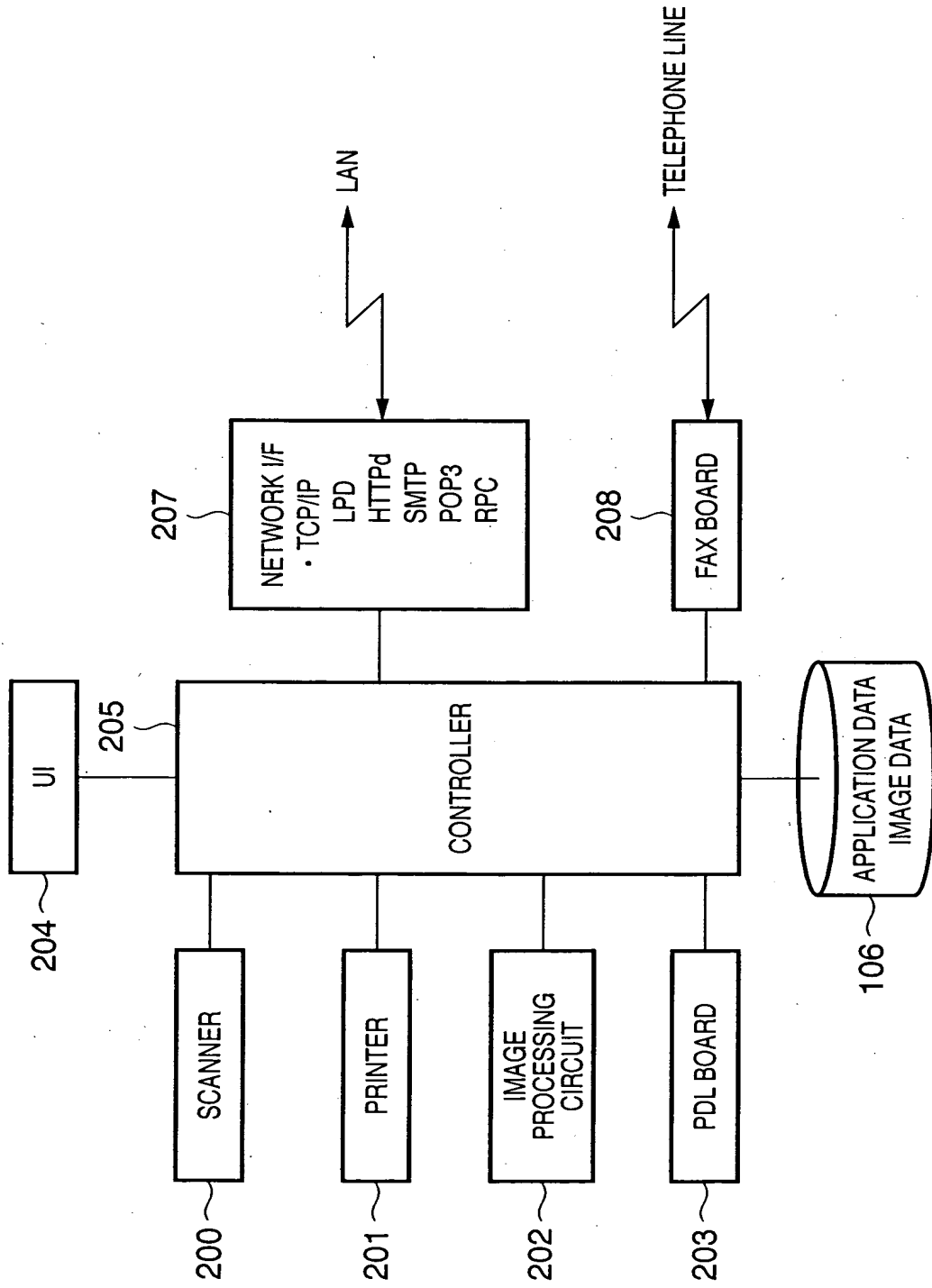
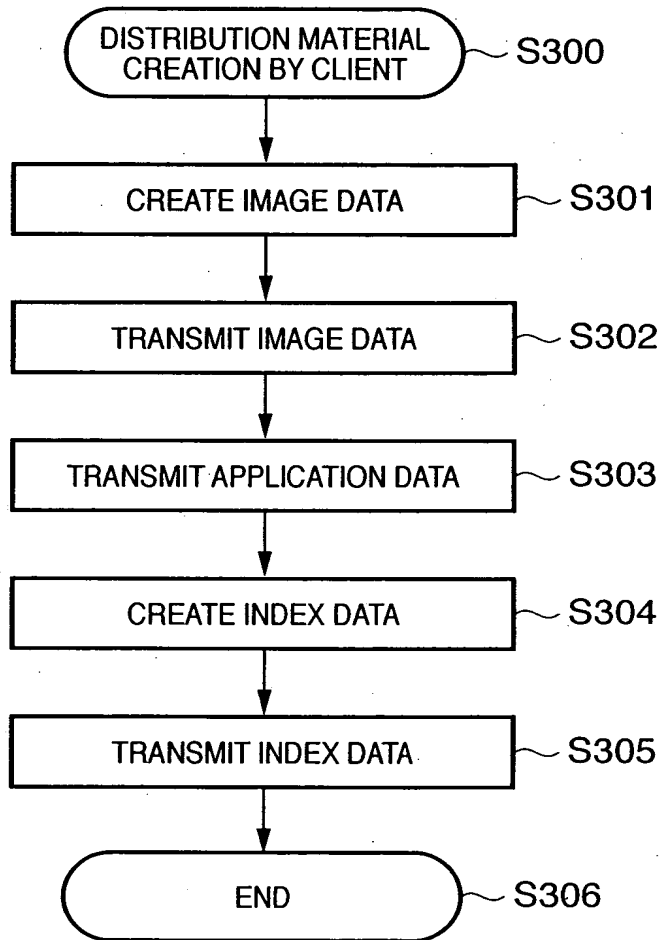


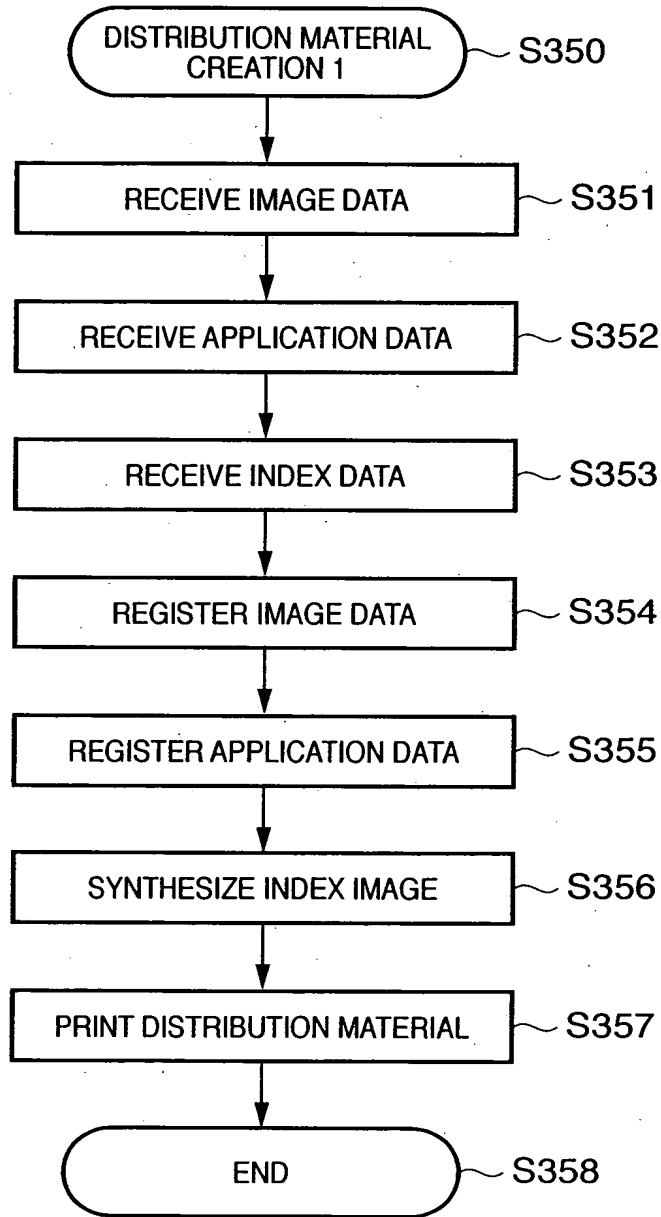
FIG. 2



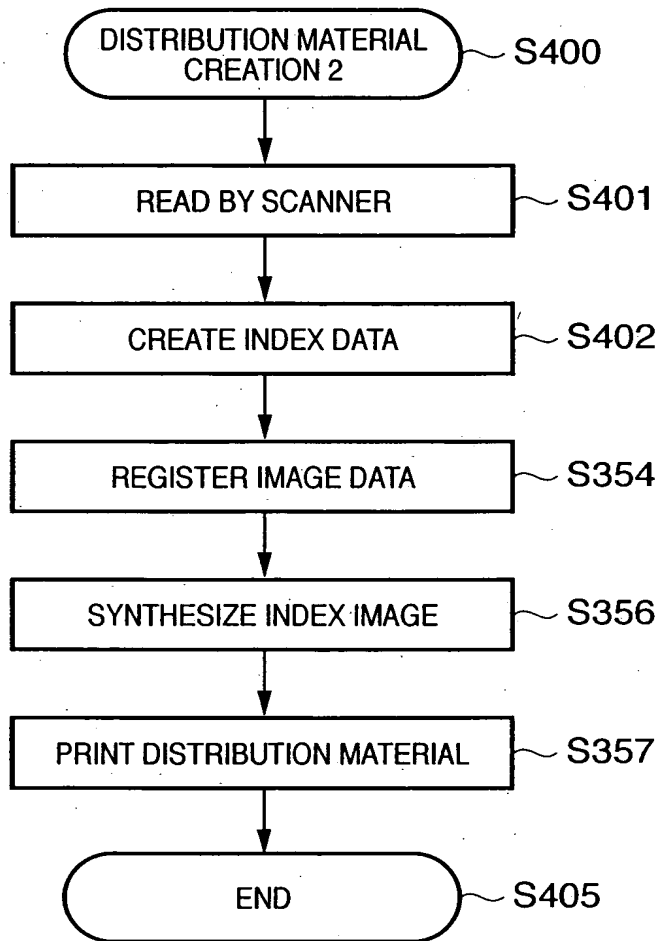
**FIG. 3**



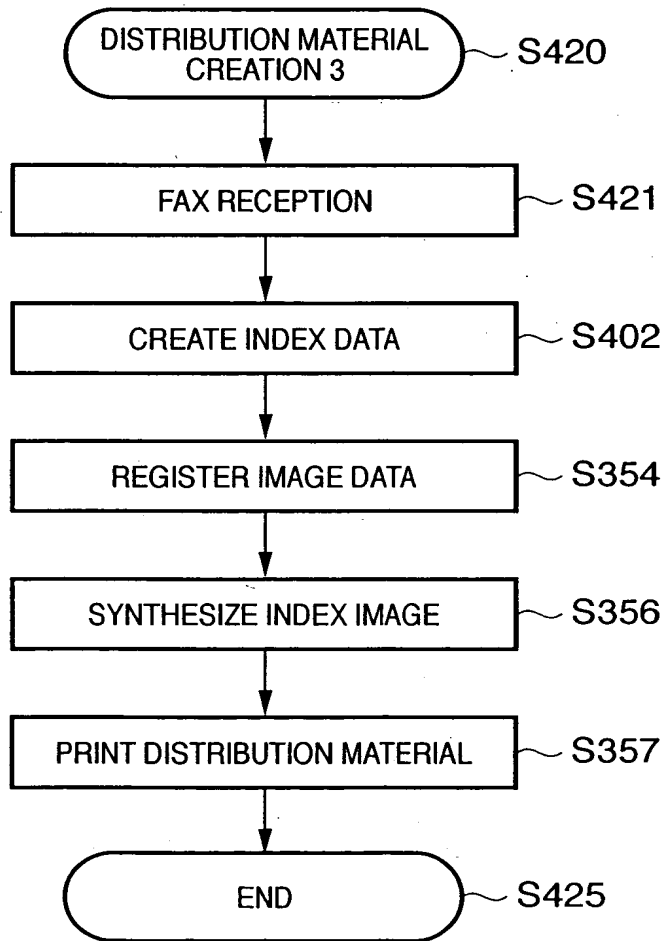
**FIG. 4**



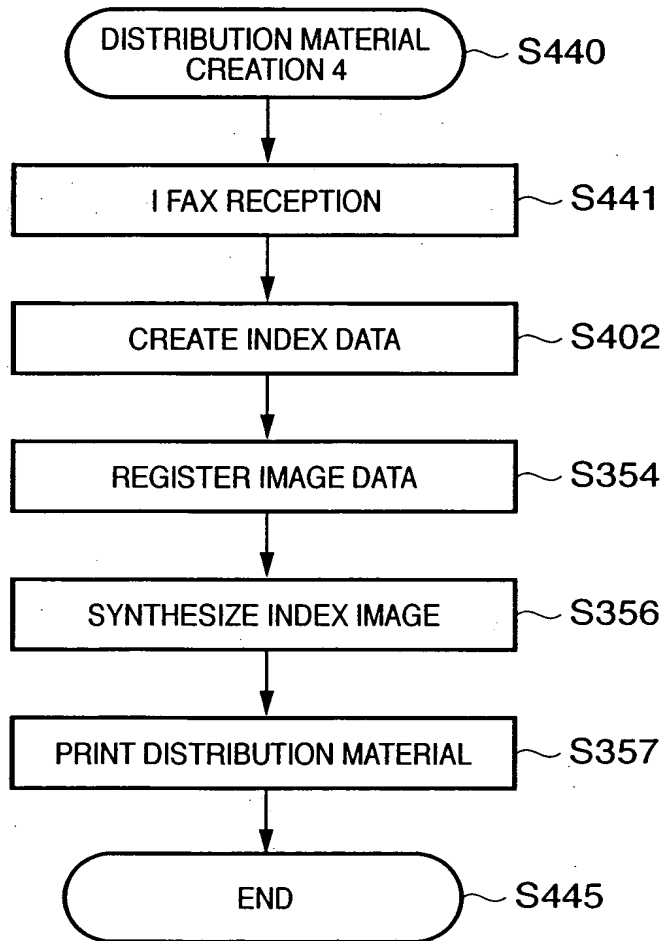
**FIG. 5**



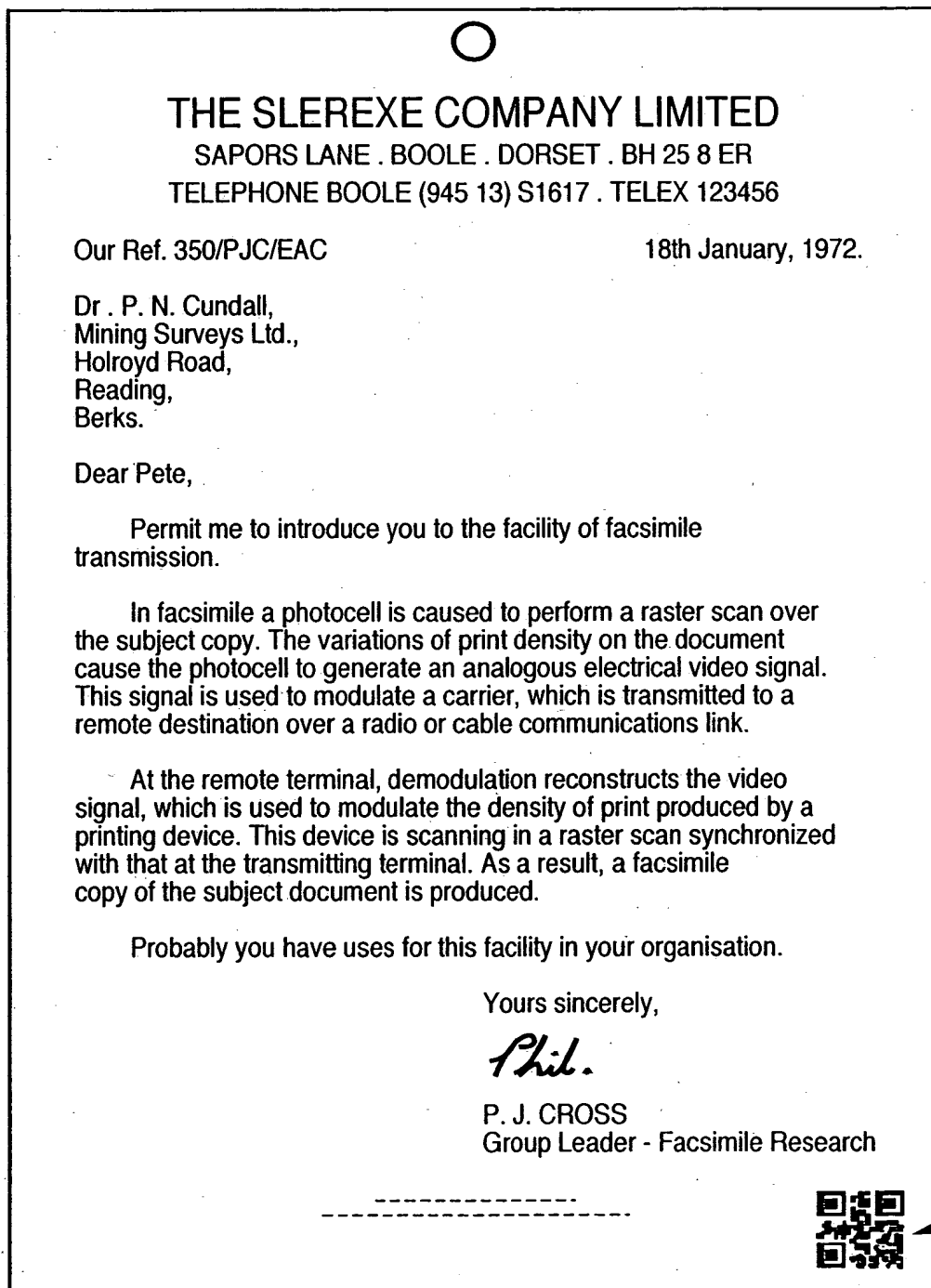
**FIG. 6**



**FIG. 7**



# FIG. 8



○

## THE SLEREXE COMPANY LIMITED

SAPORS LANE . BOOLE . DORSET . BH 25 8 ER  
TELEPHONE BOOLE (945 13) S1617 . TELEX 123456

Our Ref. 350/PJC/EAC

18th January, 1972.

Dr . P . N . Cundall,  
Mining Surveys Ltd.,  
Holroyd Road,  
Reading,  
Berks.

Dear Pete,

Permit me to introduce you to the facility of facsimile transmission.

In facsimile a photocell is caused to perform a raster scan over the subject copy. The variations of print density on the document cause the photocell to generate an analogous electrical video signal. This signal is used to modulate a carrier, which is transmitted to a remote destination over a radio or cable communications link.

At the remote terminal, demodulation reconstructs the video signal, which is used to modulate the density of print produced by a printing device. This device is scanning in a raster scan synchronized with that at the transmitting terminal. As a result, a facsimile copy of the subject document is produced.

Probably you have uses for this facility in your organisation.

Yours sincerely,

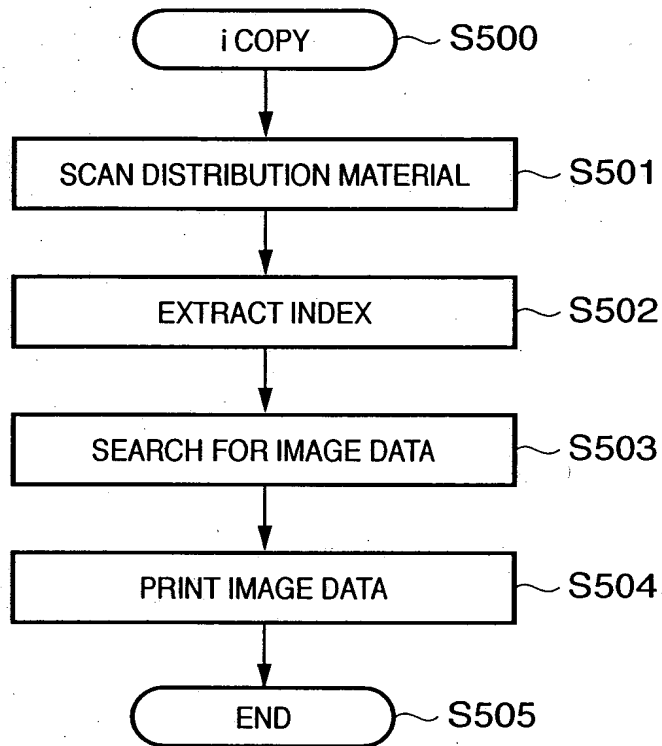
*Phil.*

P. J. CROSS  
Group Leader - Facsimile Research

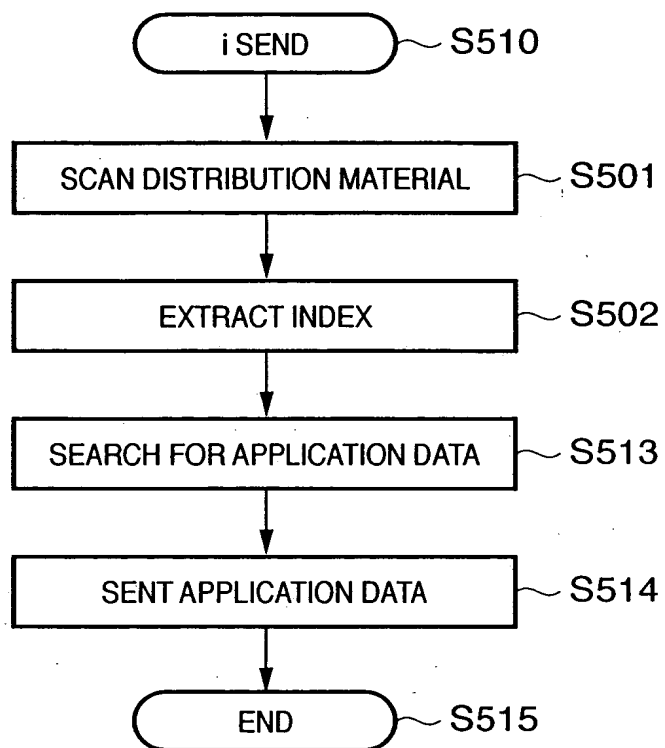




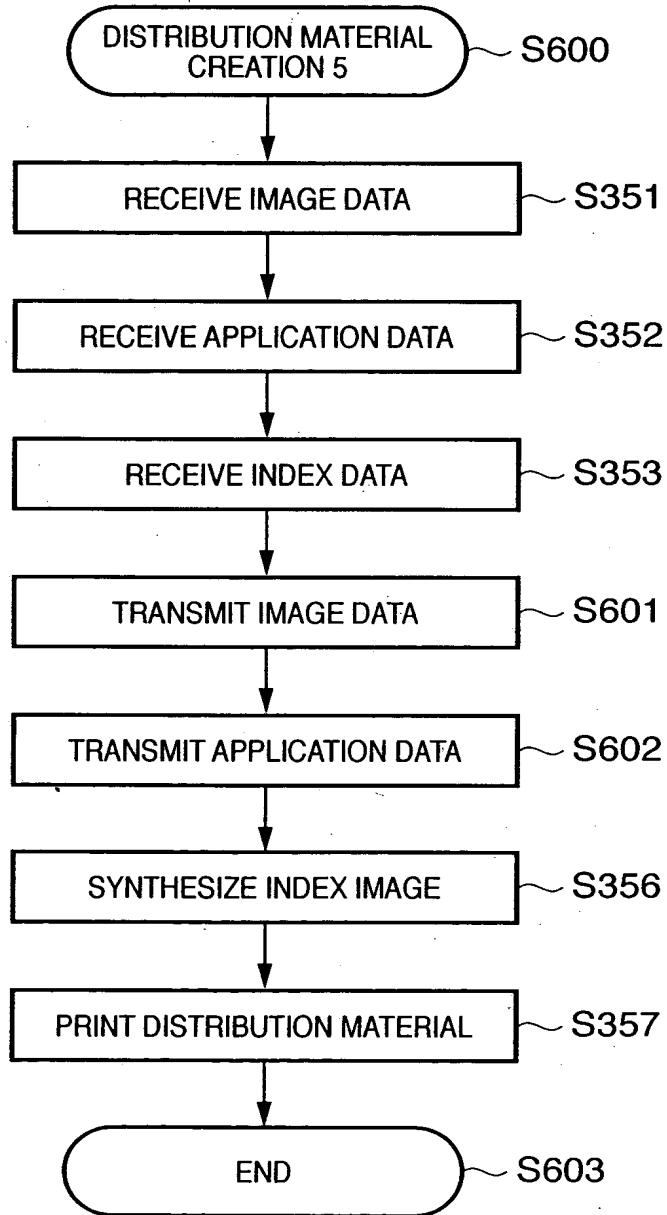
**FIG. 9**



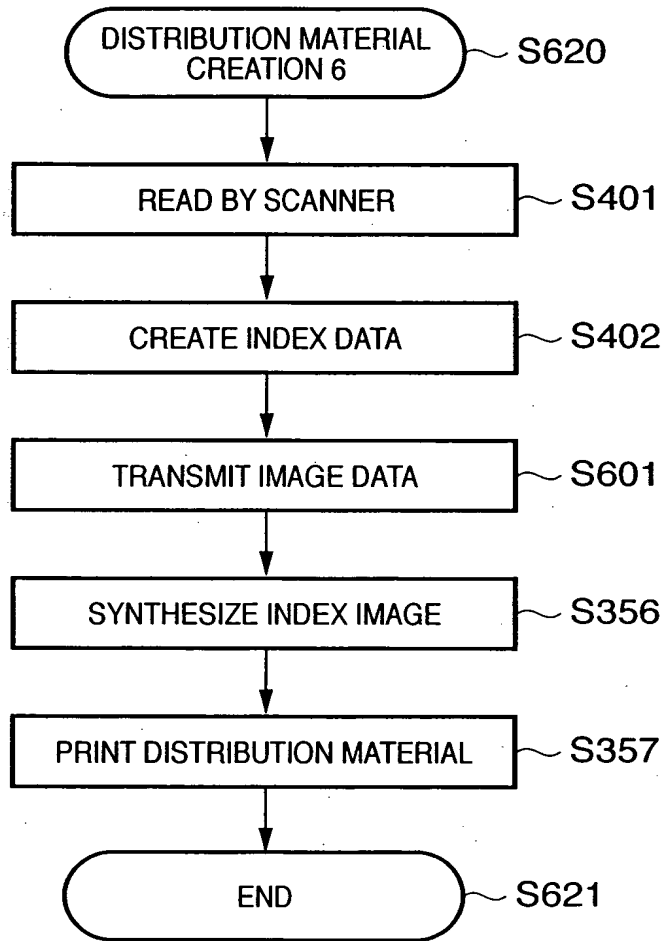
**FIG. 10**



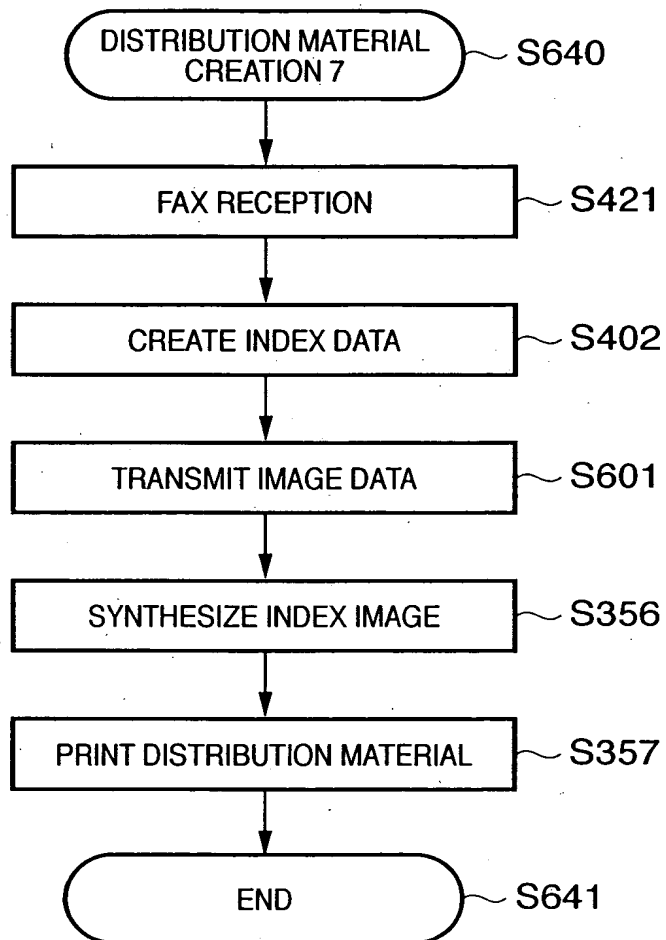
# FIG. 11



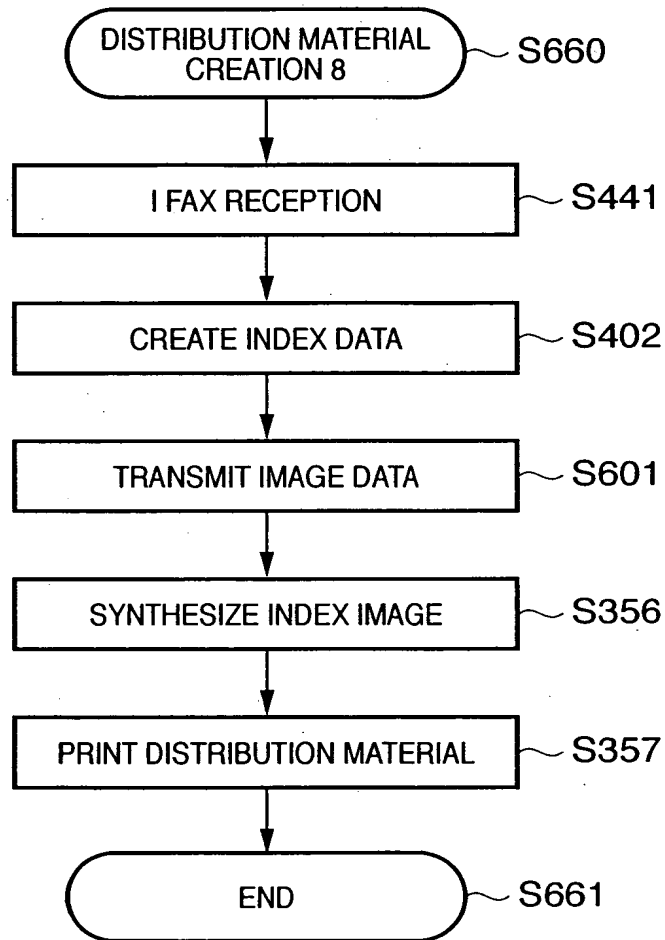
**FIG. 12**



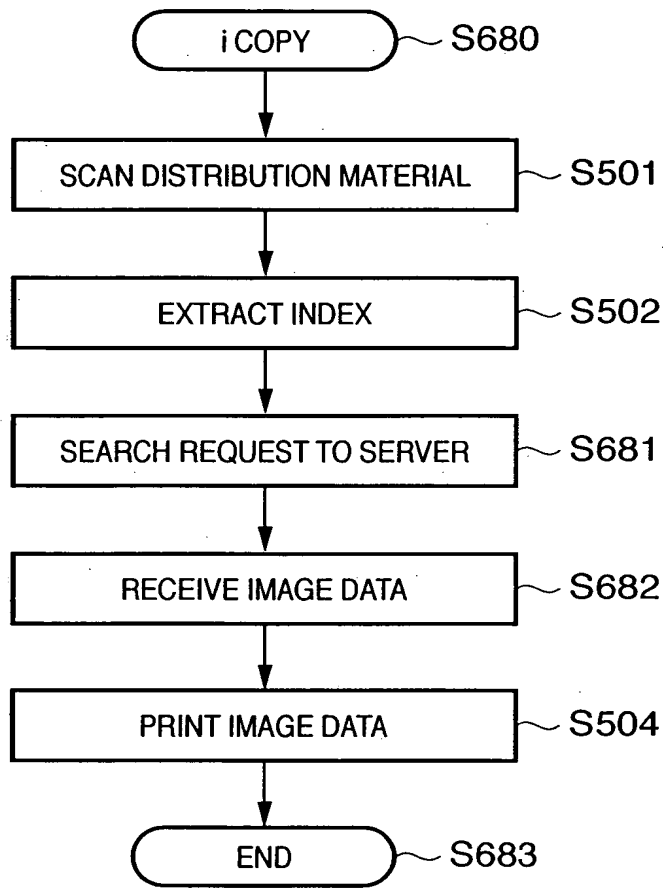
**FIG. 13**



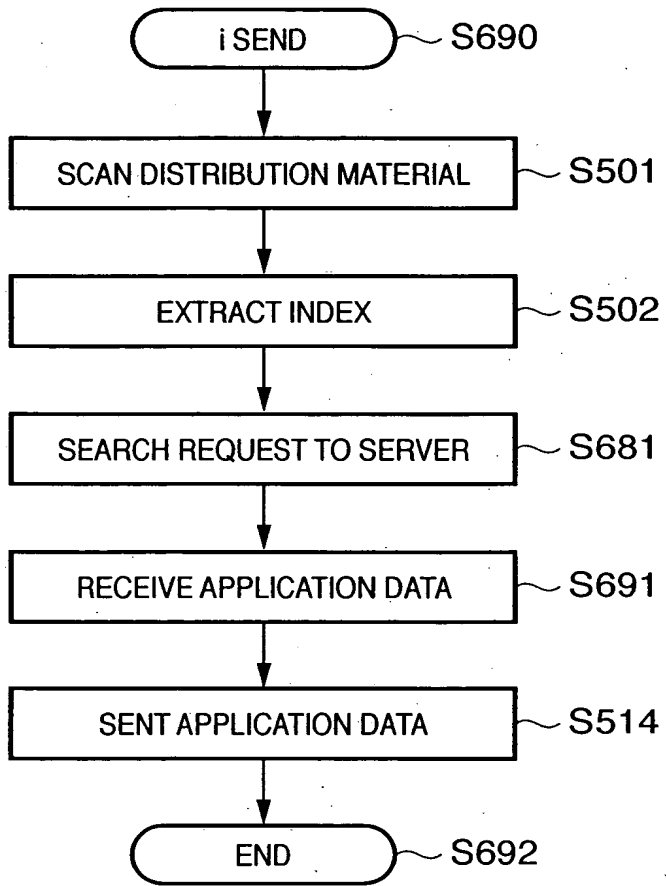
**FIG. 14**



**FIG. 15**

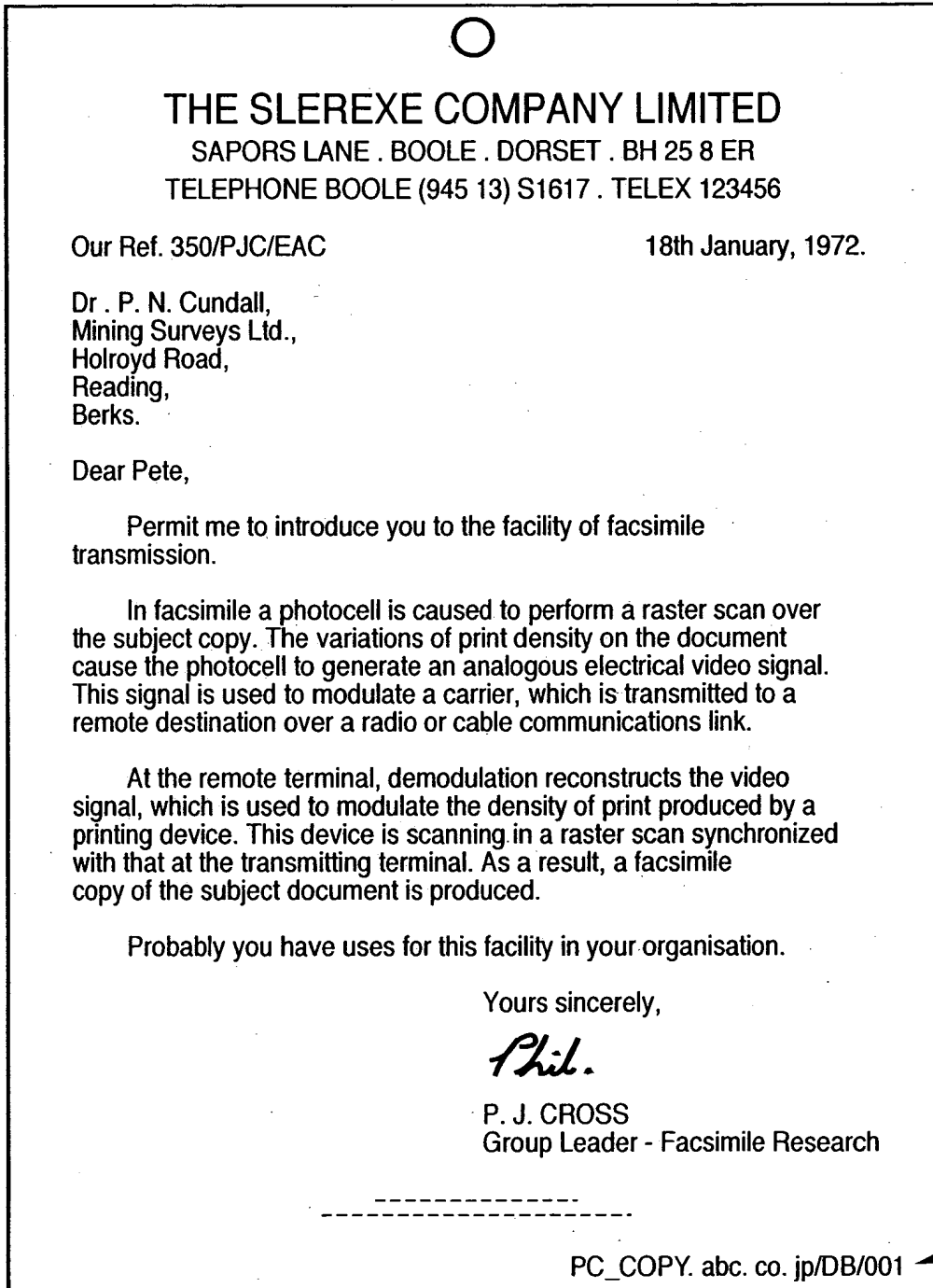


**FIG. 16**





# FIG. 17



450



**THE SLEREXE COMPANY LIMITED**

SAPORS LANE . BOOLE . DORSET . BH 25 8 ER  
TELEPHONE BOOLE (945 13) S1617 . TELEX 123456

Our Ref. 350/PJC/EAC

18th January, 1972.

Dr . P . N . Cundall,  
Mining Surveys Ltd.,  
Holroyd Road,  
Reading,  
Berks.

Dear Pete,

Permit me to introduce you to the facility of facsimile transmission.

In facsimile a photocell is caused to perform a raster scan over the subject copy. The variations of print density on the document cause the photocell to generate an analogous electrical video signal. This signal is used to modulate a carrier, which is transmitted to a remote destination over a radio or cable communications link.

At the remote terminal, demodulation reconstructs the video signal, which is used to modulate the density of print produced by a printing device. This device is scanning in a raster scan synchronized with that at the transmitting terminal. As a result, a facsimile copy of the subject document is produced.

Probably you have uses for this facility in your organisation.

Yours sincerely,

*Phil.*

P. J. CROSS  
Group Leader - Facsimile Research

-----

PC\_COPY. abc. co. jp/DB/001

700

**FIG. 18**

	INDEX	CHARACTER STRING
800 ~	000	Dear
801 ~	001	Dea r
802 ~	010	De ar
803 ~	011	De a r
804 ~	100	D ear
805 ~	101	D ea r
806 ~	110	D e ar
807 ~	111	D e a r